

Product Overview

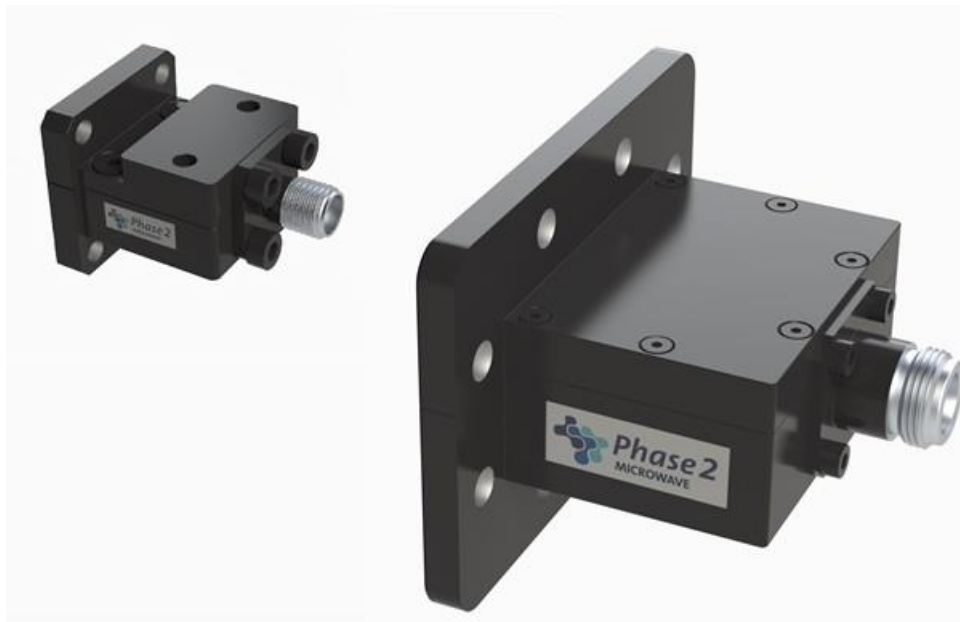
Phase 2 Microwaves Ltd offers a range of standard waveguide to coaxial transitions in both right angle and end launch configurations covering many waveguide bands from 2.6 to 26.5GHz.

These adaptors offer cost effective solutions to many industry requirements.

In addition to standard transitions Phase 2 Microwave Ltd also offer bespoke designs optimised to give improved VSWR's over narrower bands, higher power handling, alternative and custom flanges and connectors.

To discuss these requirements in more detail contact

sales@phase2mw.co.uk



Key Specification

| | |
|---------------------|---------------|
| Model Number | 007406 |
| Waveguide | WG17 (WR75) |
| Coaxial Connector | N Type Female |
| Operating Frequency | 9.84 - 15GHz |
| VSWR | <1.2:1 |
| Power Handling | 50W |
| Configuration | End Launch |
| Flange Type | UBR120 |

Environmental

| | |
|-------------------|----------------------|
| Temperature Range | -40 to +70 Degrees C |
|-------------------|----------------------|

Mechanical

| | |
|---------------------------|--------------------------------|
| Waveguide Material | Aluminium |
| Connector Material | Passivated stainless steel |
| Finish | Acid Passivation & Black Paint |
| Interface Control Drawing | 007406-ICD |
| RoHS | Compliant |

Note: All information is correct at date of issue. Specifications are subject to change without notice
 Issued: 20/02/2023
 Revision: 01

