

Product Overview

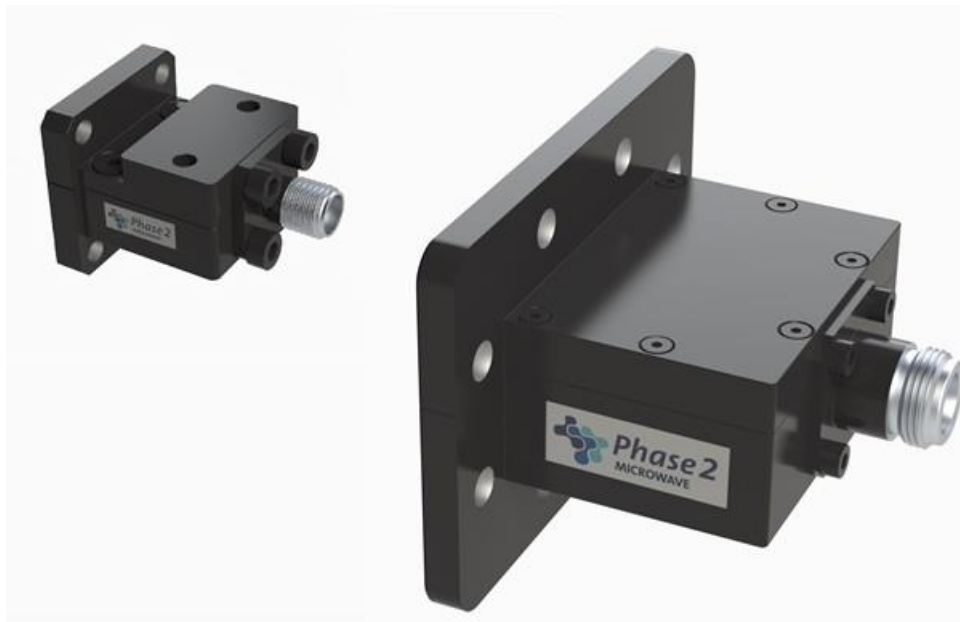
Phase 2 Microwaves Ltd offers a range of standard waveguide to coaxial transitions in both right angle and end launch configurations covering many waveguide bands from 2.6 to 26.5GHz.

These adaptors offer cost effective solutions to many industry requirements.

In addition to standard transitions Phase 2 Microwave Ltd also offer bespoke designs optimised to give improved VSWR's over narrower bands, higher power handling, alternative and custom flanges and connectors.

To discuss these requirements in more detail contact

sales@phase2mw.co.uk



Key Specification

Model Number	007403
Waveguide	WG14 (WR137)
Coaxial Connector	N Type Female
Operating Frequency	5.38 - 8.17GHz
VSWR	<1.2:1
Power Handling	150W
Configuration	End Launch
Flange Type	UDR70

Environmental

Temperature Range	-40 to +70 Degrees C
-------------------	----------------------

Mechanical

Waveguide Material	Aluminium
Connector Material	Passivated stainless steel
Finish	Acid Passivation & Black Paint
Interface Control Drawing	007403-ICD
RoHS	Compliant

Note: All information is correct at date of issue. Specifications are subject to change without notice
 Issued: 20/02/2023
 Revision: 01

