

#### Product Overview

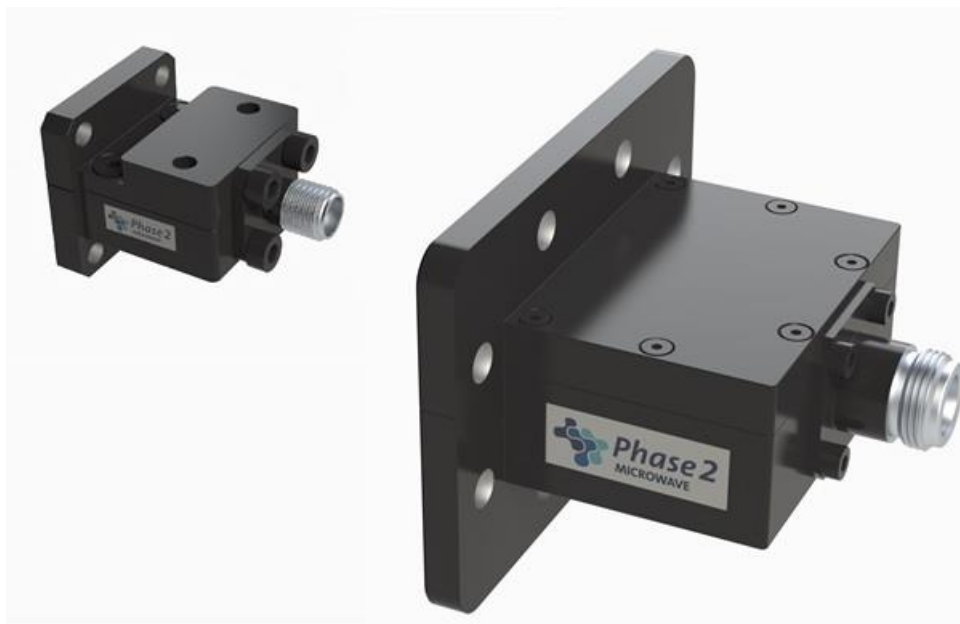
Phase 2 Microwaves Ltd offers a range of standard waveguide to coaxial transitions in both right angle and end launch configurations covering many waveguide bands from 2.6 to 26.5GHz.

These adaptors offer cost effective solutions to many industry requirements.

In addition to standard transitions Phase 2 Microwave Ltd also offer bespoke designs optimised to give improved VSWR's over narrower bands, higher power handling, alternative and custom flanges and connectors.

To discuss these requirements in more detail contact

[sales@phase2mw.co.uk](mailto:sales@phase2mw.co.uk)



Key Specification	
Model Number	007401
Waveguide	WG12 (WR187)
Coaxial Connector	N Type Female
Operating Frequency	3.94 – 5.99GHz
VSWR	<1.2:1
Power Handling	150W
Configuration	End Launch
Flange Type	UDR48

Environmental	
Temperature Range	-40 to +70 Degrees C

Mechanical	
Waveguide Material	Aluminium
Connector Material	Passivated stainless steel
Finish	Acid Passivation & Black Paint
Interface Control Drawing	007401-ICD
RoHS	Compliant

Note: All information is correct at date of issue. Specifications are subject to change without notice  
 Issued: 20/02/2023  
 Revision: 01

