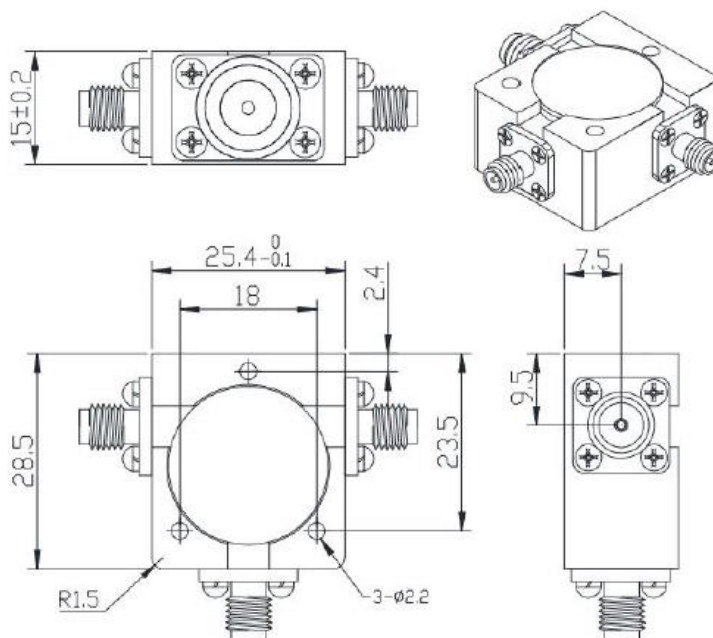
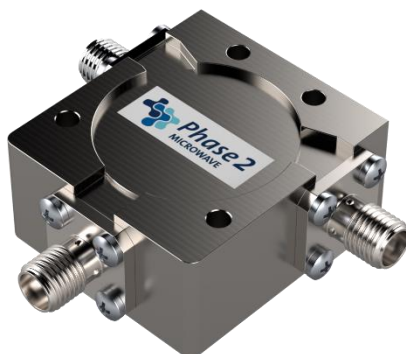


**KEY FEATURES**

- Excellent, low insertion loss
- High isolation and reliability
- Specifically designed for communications applications, military applications, cellular and wireless markets etc.



**Key Specification**

Model	006490
Nominal Impedance	50ohm
Frequency Range	2300-2700 MHz
Insertion Loss	$\leq 0.4$ dB
Isolation	$\geq 20$ dB
Forward Power	100 Watts CW
V.S.W.R	$\leq 1.25$

**Environmental**

Temperature Range	-30°C ~ +75°C
-------------------	---------------

**Mechanical**

Housing	Aluminum
Connector	Gold plated brass or Tri-metal plated brass
Female Contact	Gold plated beryllium brass
RoHs	Compliant
Dimension	25.4×28.5×15mm

Note: All information is correct at date of issue. Specifications are subject to change without notice

Issued: 17/11/22

Revision: 02