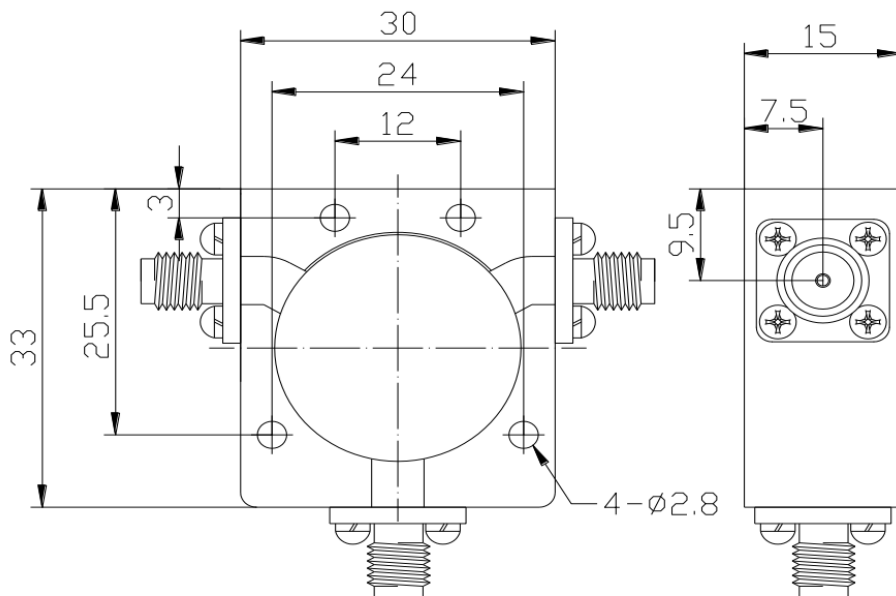
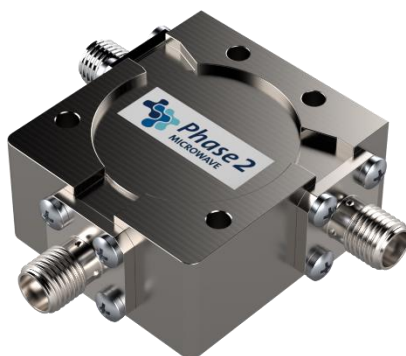


KEY FEATURES

- Excellent, low insertion loss
- High isolation and reliability
- Specifically designed for communications applications, military applications, cellular and wireless markets etc.



Key Specification

Model	006488
Nominal Impedance	50ohm
Frequency Range	2100-2700 MHz
Insertion Loss	≤ 0.5 dB
Isolation	≥ 18 dB
Forward Power	100 Watts CW
V.S.W.R	≤ 1.30

Environmental

Temperature Range	-30°C ~ +75°C
-------------------	---------------

Mechanical

Housing	Aluminum
Connector	Gold plated brass or Tri-metal plated brass
Female Contact	Gold plated beryllium brass
RoHs	Compliant
Dimension	30×33×15mm

Note: All information is correct at date of issue. Specifications are subject to change without notice

Issued: 16/07/20

Revision: 01