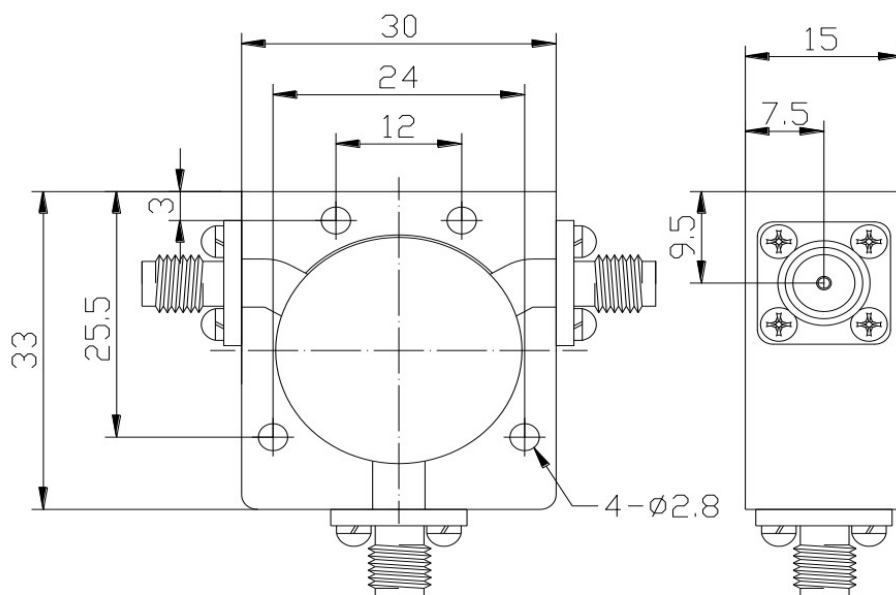


KEY FEATURES

- Excellent, low insertion loss
- High isolation and reliability
- Specifically designed for communications applications, military applications, cellular and wireless markets etc.



Key Specification

| | |
|-------------------|----------------|
| Model | 006478 |
| Nominal Impedance | 50ohm |
| Frequency Range | 1290-1310 MHz |
| Insertion Loss | ≤ 0.25 dB |
| Isolation | ≥ 25 dB |
| Forward Power | 100 Watts CW |
| V.S.W.R | ≤ 1.15 |

Environmental

| | |
|-------------------|---------------|
| Temperature Range | -30°C ~ +75°C |
|-------------------|---------------|

Mechanical

| | |
|----------------|---|
| Housing | Aluminum |
| Connector | Gold plated brass or Tri-metal plated brass |
| Female Contact | Gold plated beryllium brass |
| RoHs | Compliant |
| Dimension | 30×33×15mm |

Note: All information is correct at date of issue. Specifications are subject to change without notice

Issued: 16/07/20

Revision: 01