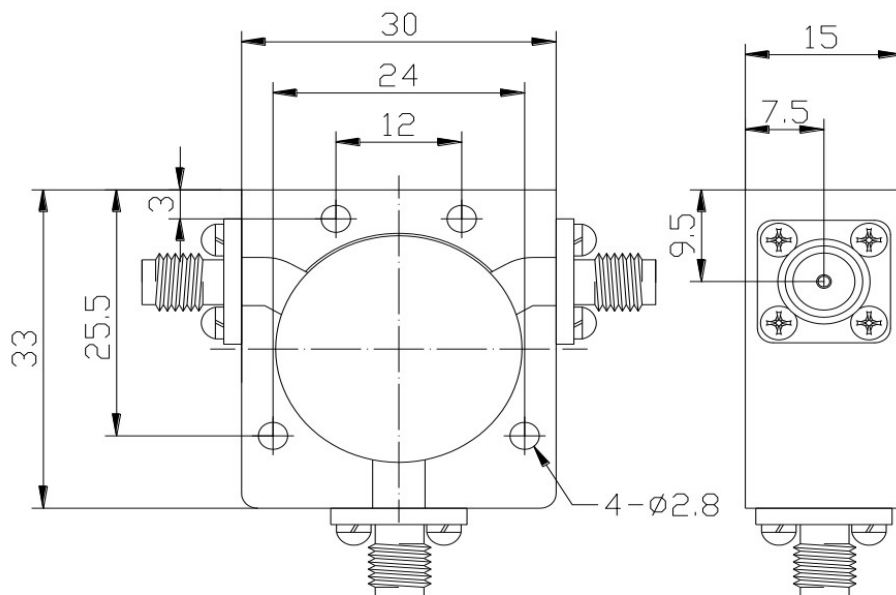
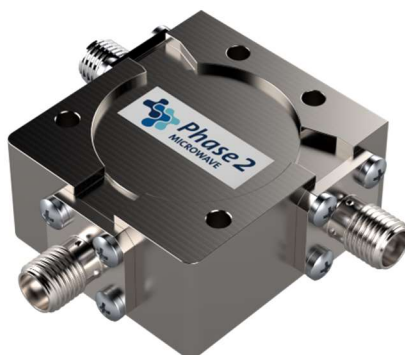


**KEY FEATURES**

- Excellent, low insertion loss
- High isolation and reliability
- Specifically designed for communications applications, military applications, cellular and wireless markets etc.



**Key Specification**

Model	006474
Nominal Impedance	50ohm
Frequency Range	950-1450 MHz
Insertion Loss	$\leq 0.6$ dB
Isolation	$\geq 15$ dB
Forward Power	100 Watts CW
V.S.W.R	$\leq 1.45$

**Environmental**

Temperature Range	-30°C ~ +75°C
-------------------	---------------

**Mechanical**

Housing	Aluminum
Connector	Gold plated brass or Tri-metal plated brass
Female Contact	Gold plated beryllium brass
RoHs	Compliant
Dimension	30×33×15 mm

Note: All information is correct at date of issue. Specifications are subject to change without notice  
Issued: 16/07/20  
Revision: 01